



YOGURT FILTRATION APPLICATIONS

Process Filtration



1 Pre-Filtered Water

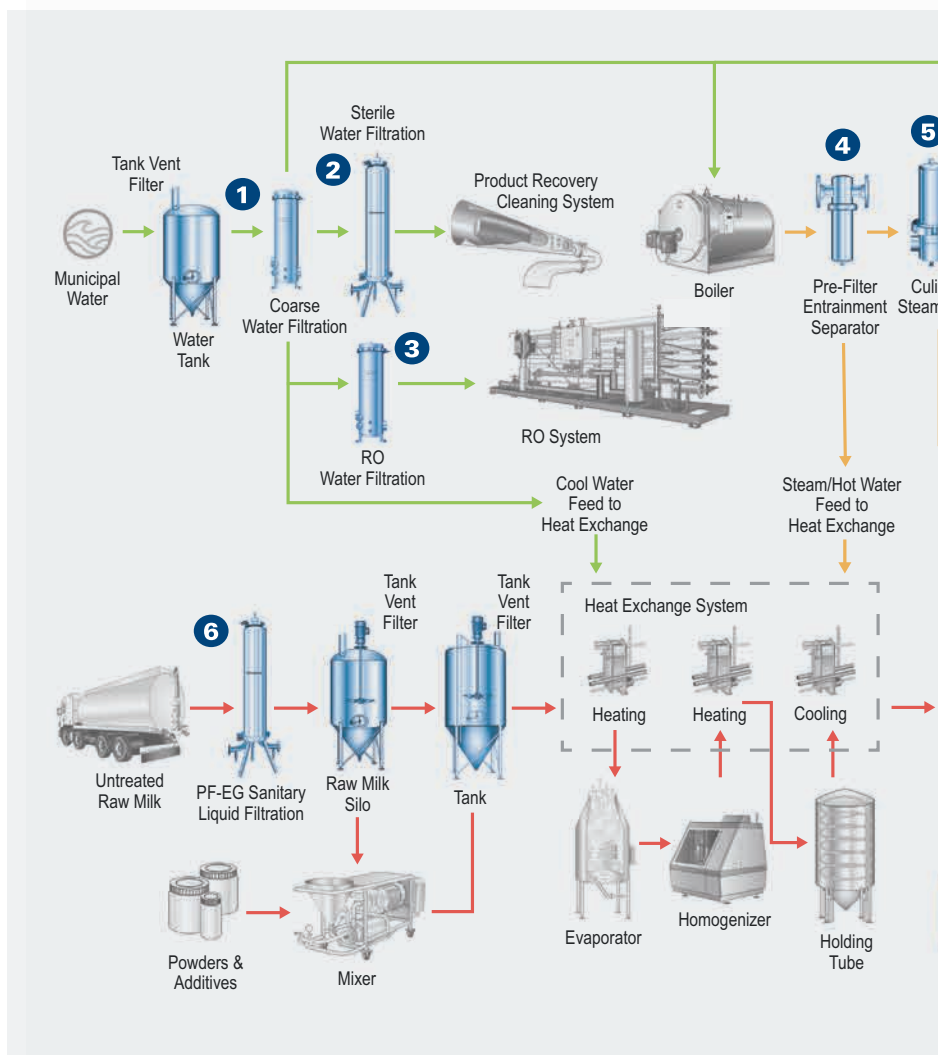
2 Ingredient & Process Water

3 Pre-Filtration for RO System

4 Steam Pre-Filter

5 Culinary Steam Filter

6 Raw Milk Filter



FOR THE YOGURT INDUSTRY

7 Tank Vent

As yogurt ingredients or cleaning liquids are added, mixed, or pumped out of holding tanks, makeup air is needed to prevent the tank from collapsing. Makeup air is also needed when steam condenses or temperature changes during sanitation or sterilization. In order to ensure that the makeup air is safe and sterile, use a P-BE tank vent housing with P-SRF V element.

8 Compressed Air Condensate

Hot air leaving the air compressor is often cooled by an aftercooler or refrigerated air dryer which causes water vapor to condense. Use a DF-C cyclone separator to remove this water and ensure that storage

tanks remain relatively clean and dry to prevent rust from forming. Run the condensate drains from all compressed air equipment to a DS oil-water separator which will allow the wastewater discharge stream to be clean and compliant with environmental and safety regulations.

9 Plant Compressed Air

Other compressed air users such as airveyors, packagers, palletizers, and general pneumatic equipment should be supplied with clean, dry air to prevent malfunction. The DF filter housings and elements have the ability to remove both dirt and oil and water aerosols to protect equipment. Use three DF filter housings in series with V, M, and S filter elements to meet SQF regulations for compressed air.

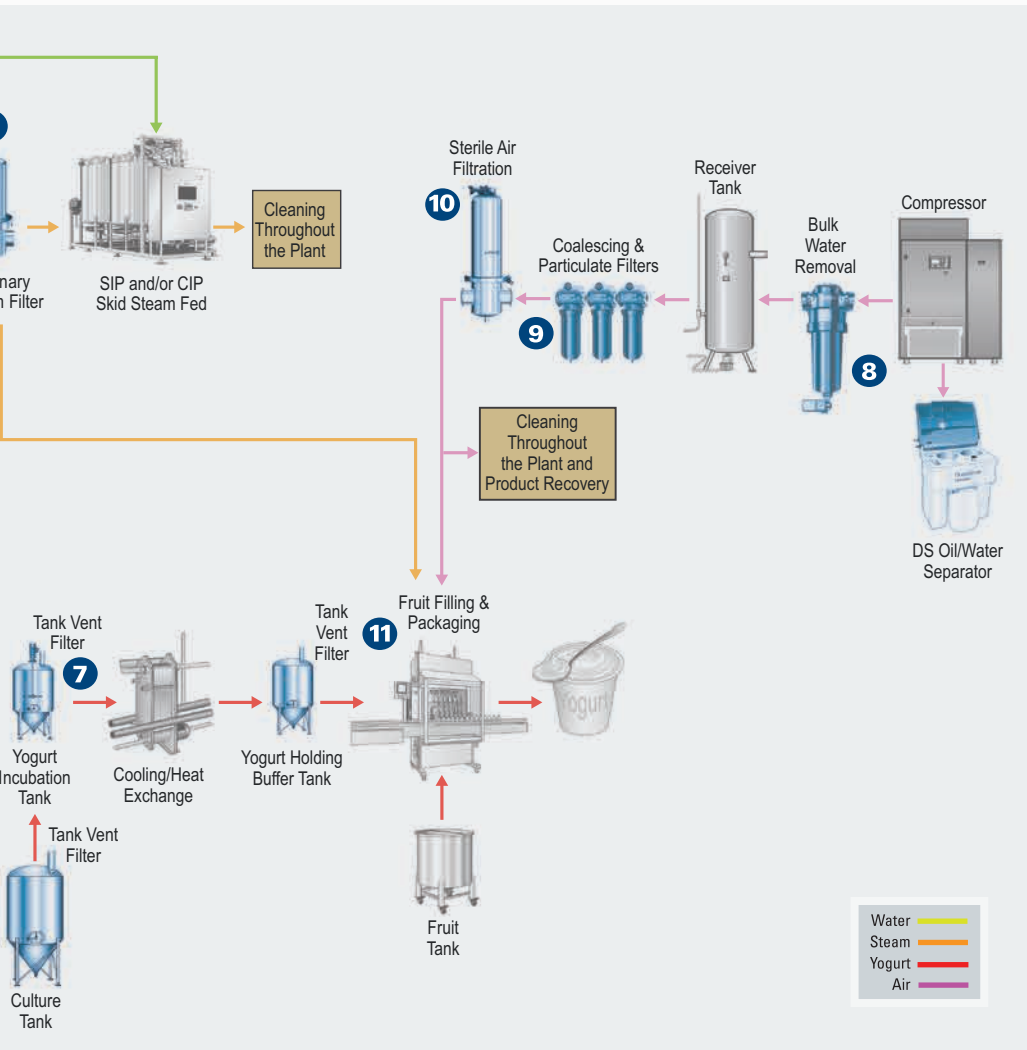
10 Sterile Air Supply

Sterile air is used in processing equipment and to also remove moisture from process lines after a liquid cleaning rinse. In both instance, sterile air is required to ensure that no contamination is introduced into the final product. A PF-EG housing with a PF-PT 0.2

micron filter will ensure that sterile air used for product contact surfaces is clean and free from microorganisms and particulates.

11 Fruit Filling & Packaging

Modern yogurt filling and packaging lines require a high degree of cleanliness during normal operation. Sterile air is needed to maintain a sterile open-air environment as the cups are formed, and to counter-fill sealed yogurt tanks as they are emptied. Sanitary steam is used to sterilize foil wrappers to ensure that no contaminant is introduced before the cups are sealed by the foil.



SUPERIOR FILTRATION. **MAXIMUM PROTECTION.**

Extensive Product Portfolio

- Process air, steam and liquid filtration products
- Performance engineered to sanitary guidelines
- Wide range of filtration media for any application
- Housings, elements, and parts in-stock, ready to ship

Advanced Technology

- Optimized filtration performance and efficiency
- Extensive research and development capabilities
- Advanced design and testing capabilities
- Over 1,000 engineers and scientists worldwide

Unrivalled Support and Expertise

- Expert technical specialists available as resource
- Comprehensive pre- and post-sale support
- Extensive filter analysis and trouble-shooting
- 100 years of successful global manufacturing



Registered



Standard No. 10-04*



Member of



Member of



Member of



Member of



Important Notice

Many factors beyond the control of Donaldson can affect the use and performance of Donaldson products in a particular application, including the conditions under which the product is used. Since these factors are uniquely within the user's knowledge and control, it is essential the user evaluate the products to determine whether the product is fit for the particular purpose and suitable for the user's application. All products, product specifications, availability and data are subject to change without notice, and may vary by region or country.



Donaldson Company, Inc.
Process Filtration
PO Box 1299
Minneapolis, MN
55440-1299 U.S.A.

Tel 800-543-3634 (USA)
Tel 800-343-3639 (within Mexico)
Fax 952-885-4791
processfilters@donaldson.com
donaldsonprocessfilters.com

F117062 (06/17) ENG Yogurt Filtration Applications
©2017 Donaldson Company, Inc.

All Rights Reserved.

Donaldson and the color blue are marks of Donaldson Company, Inc.
All other marks belong to their respective owners.